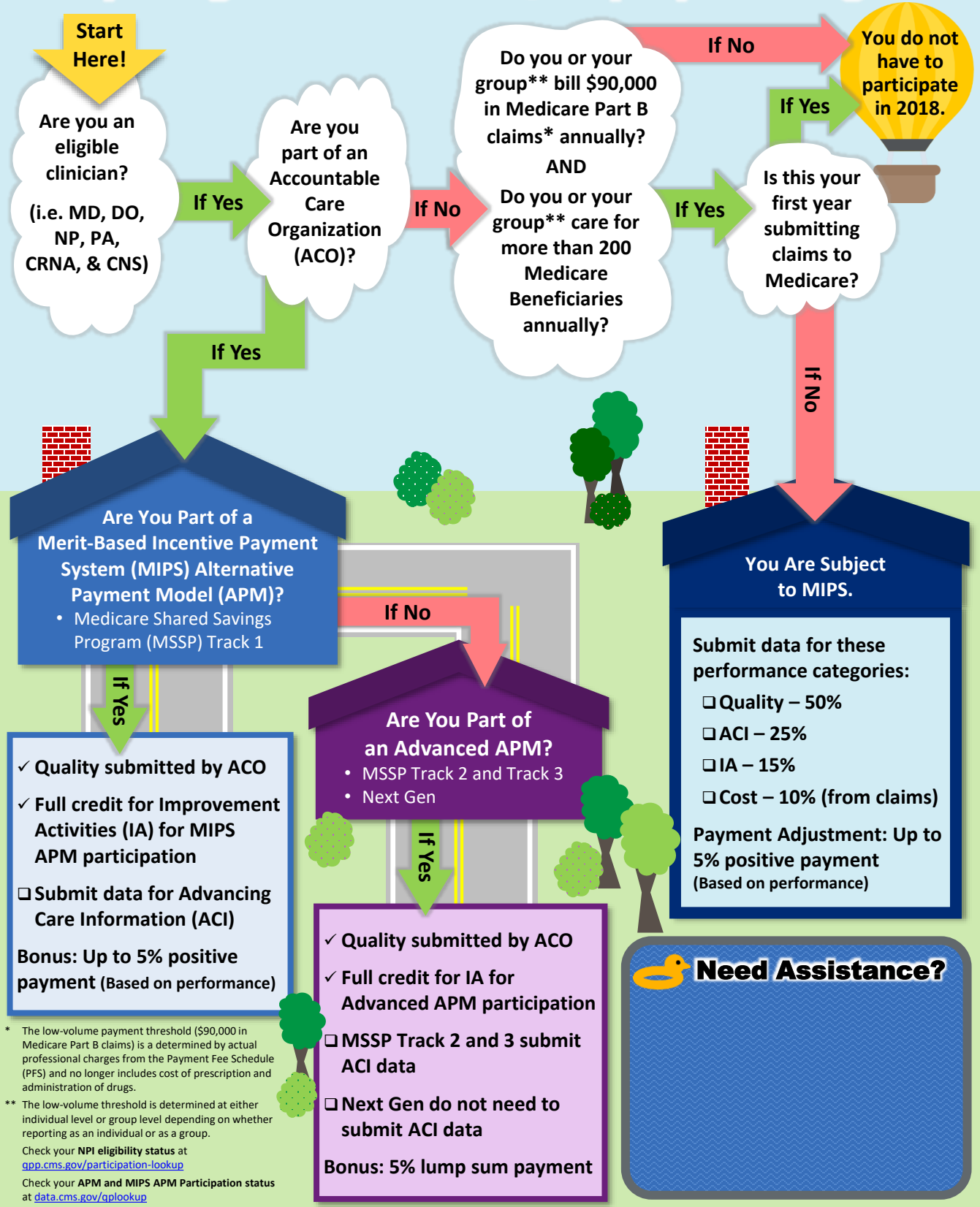


Are you eligible for the 2018 Quality Payment Program?



* The low-volume payment threshold (\$90,000 in Medicare Part B claims) is a determined by actual professional charges from the Payment Fee Schedule (PFS) and no longer includes cost of prescription and administration of drugs.

** The low-volume threshold is determined at either individual level or group level depending on whether reporting as an individual or as a group. Check your **NPI eligibility status** at qpp.cms.gov/participation-lookup Check your **APM and MIPS APM Participation status** at data.cms.gov/qpllookup

Need Assistance?